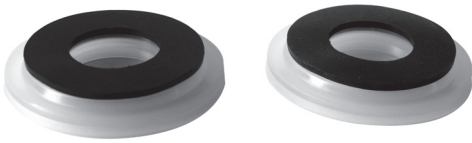


End Cap Configurations

Code 1 (C1)
Double Open Ends



Code 5 (C5)
Recessed Cup/222



Code 2 (C2)
213/Recessed Cup



Code 6 (C6)
Flat/226



Code 3 (C3)
Flat/222



Code 7 (C7)
Fin/226



Code 4 (C4)
Single Open End/Flat Closed End



Code 8 (C8)
Fin/222

