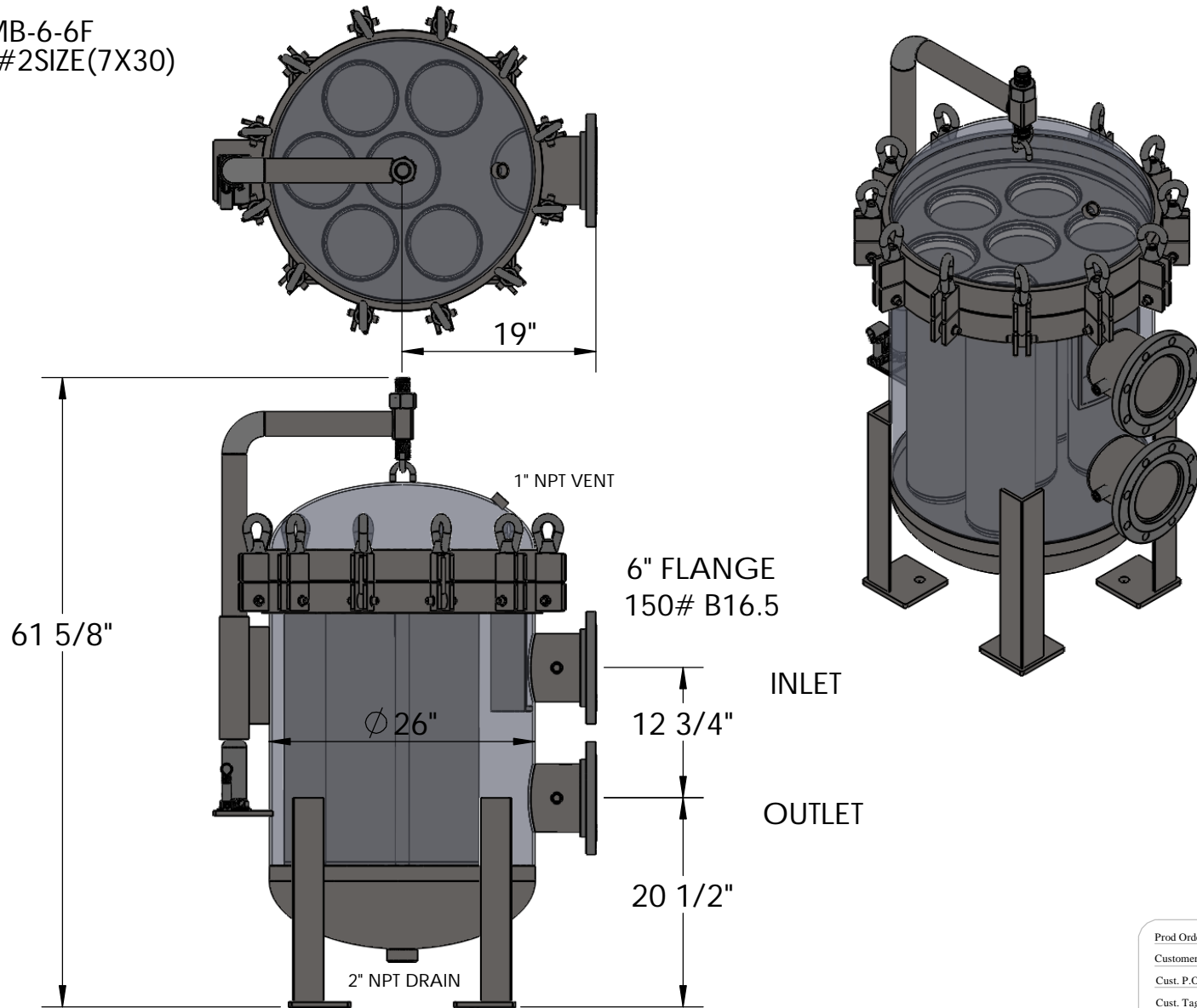


FILTER LIFE 0-15 PSID, MAXIMUM DIFFERENTIAL 25PSID
 6-BAG FLOW RANGE 1-900 GPM, MAXIMUM FLOW RATE 1080 GPM WATER
 SRMB-(#BAGS)-(I/O SIZE)-(MATERIAL)-(OPTION)

SRMB-6-6F
 (6) #2SIZE(7X30)



STANDARD EQUIPMENT:
 -PERFORATED STAINLESS BASKET
 -BUNA ORING SEAL
 -MAWP 150 PSI @ 200F

Prod Order: -	M.A.W.P. 150 P.S.I at 200 F
Customer: -	M.D.M.T. -20 F at 150 P.S.I
Cust. P.O.: -	Hydrostatic Test at 195 P.S.I
Cust. Tag: -	
Est. Weight 800 Lbs. Full 1600Lbs.	MFG. Serial# TBD

SHIPPING WEIGHT 800LBS
 68"X48"X48"

THIS REPRODUCTION IS A PROPRIETARY DESIGN AND CONFIDENTIAL INFORMATION OF UF STRAINRITE INC. AND IS LOANED SUBJECT TO THE CONDITIONS THAT: (1) IT SHALL BE USED OR CAUSED TO BE USED FOR RECORD AND REFERENCE PURPOSES; (2) IT SHALL NOT BE USED OR CAUSED TO BE USED FOR PROCUREMENT IN ANY WAY PREJUDICIAL TO UF STRAINRITE INC. INTERESTS; (3) IT SHALL NOT BE REPRODUCED OR COPIED IN WHOLE OR IN PART; AND (4) IT SHALL NOT BE DISCLOSED AS GENERAL OR SPECIFIC INFORMATION WITHOUT EXPRESSED CONSENT IN WRITING SIGNED BY AN AUTHORIZED REPRESENTATIVE OF UF STRAINRITE INC

UNLESS OTHERWISE SPECIFIED
 DIMENSIONS ARE IN INCHES
 TOLERANCES:
 ANGLES ± 10° FRACTION: ± 1/8
 .XXX=±XX .XX=±0.0625

MATERIAL
 316-304-CS

Drawn By: DCB
 Date: 5/30/2019
 WPS: SIS R2
 Drawing: REF.

SRMB-6-REFERENCE

STRAINRITE INC
 65 First Flight Drive
 Auburn Maine
 (207) 777-3100